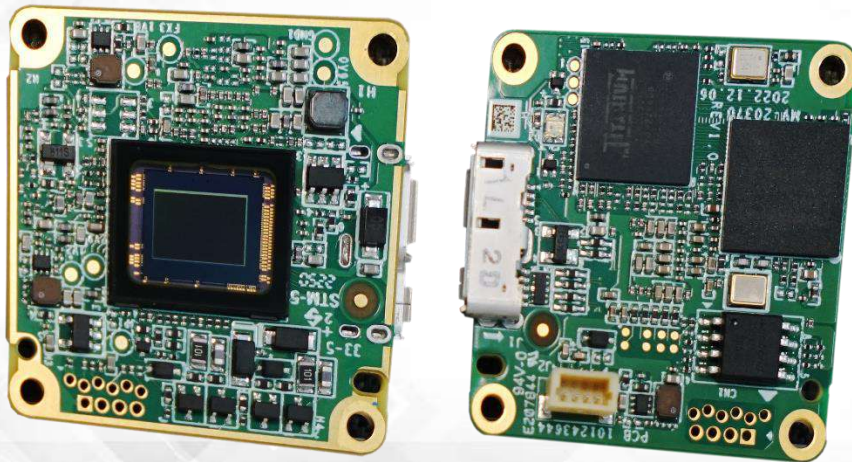


MV-CB060-10UM/UC

6 MP 1/1.8" CMOS USB3.0 Board Level Camera



GEN*i*CAM

USB[™]
VISION

Introduction

MV-CB060-10UM/UC adopts Sony® IMX178 sensor to provide high-quality images. It uses USB3.0 interface to transmit images in real time, and its max. frame rate reaches 60.9 fps in full resolution. It is small in size and can meet different spatial requirements.

Key Feature

- Compact design for flexible installation.
- Supports auto or manual adjustment of gain, exposure time, and white balance, and manual adjustment of Gamma correction, LUT, etc.
- Supports HDR function with different exposure time and gain.
- Supports hardware trigger, software trigger, free run, etc.
- Compatible with USB3 Vision Protocol, GenCam standard, and the third-party software based on these protocol and standard.

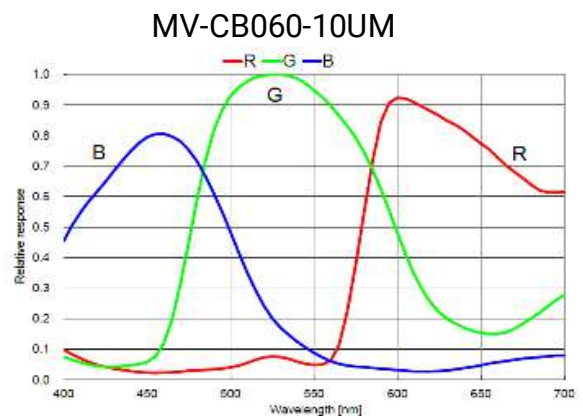
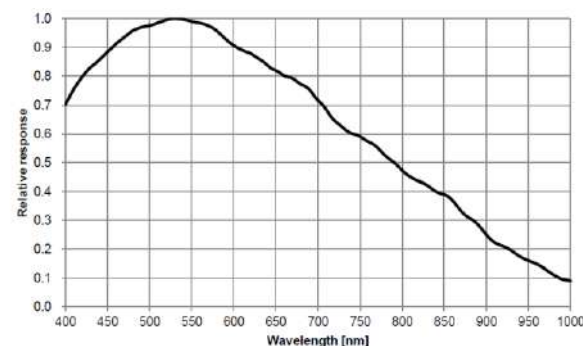
Available Model

- Single board mono camera: MV-CB060-10UM-B
- Single board color camera: MV-CB060-10UC-B
- C-mount mono camera: MV-CB060-10UM-C
- C-mount color camera: MV-CB060-10UC-C
- M12-mount mono camera: MV-CB060-10UM-S
- M12-mount color camera: MV-CB060-10UC-S

Applicable Industry

Electronic semiconductor, factory automation, logistics, liquor and beverage, medicine packing, etc.

Sensor Quantum Efficiency

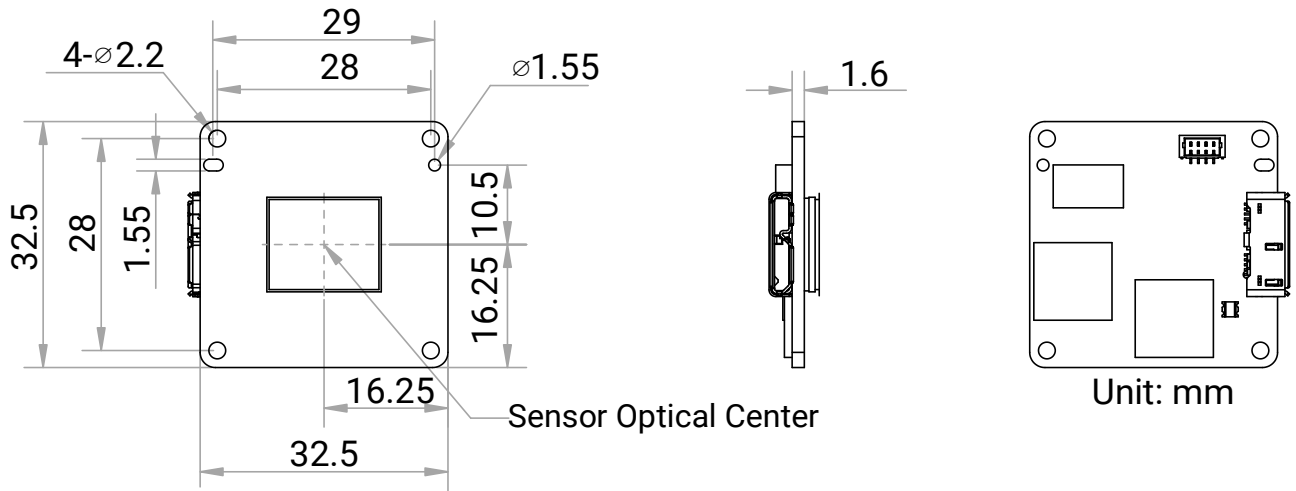


Specification

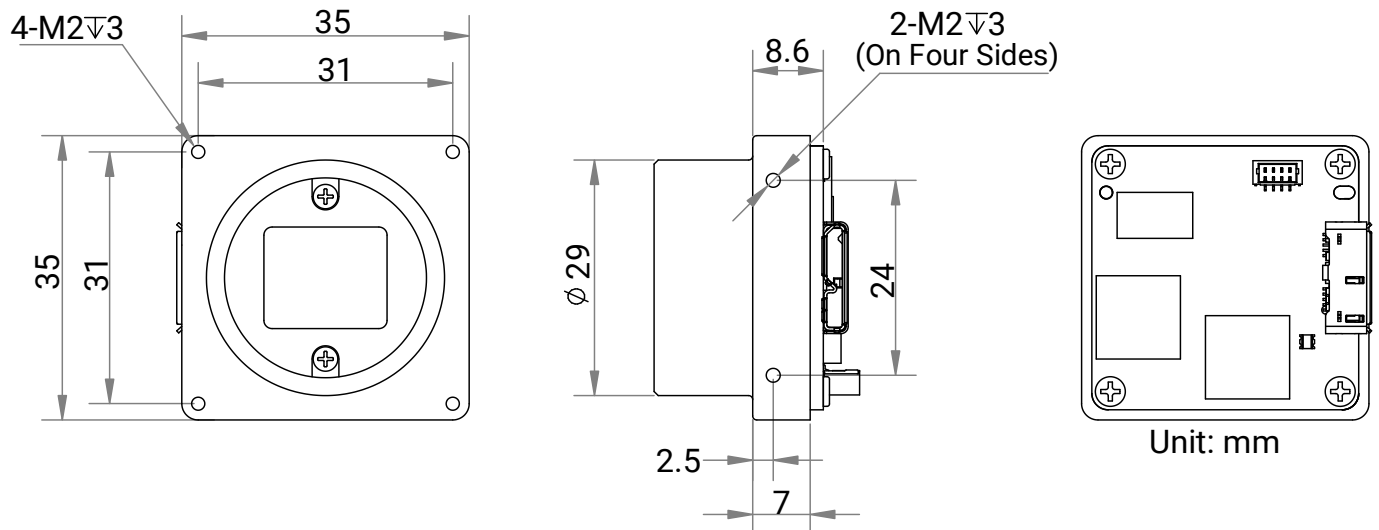
| Model | MV-CB060-10UM | MV-CB060-10UC |
|---------------------------|--|---|
| Performance | | |
| Sensor type | CMOS, rolling shutter | |
| Sensor model | Sony [®] IMX178 | |
| Pixel size | 2.4 μm × 2.4 μm | |
| Sensor size | 1/1.8" | |
| Resolution | 3072 × 2048 | |
| Max. frame rate | 60.9 fps @3072 × 2048 Mono 8 | 60.9 fps @3072 × 2048 Bayer RG 8 |
| Dynamic range | 66 dB | |
| SNR | 41.5 dB | |
| Gain | 0 dB to 24 dB | |
| Exposure time | 8 μs to 1 sec | |
| Exposure mode | Off/ Once/ Continuous exposure mode, supports Global Reset and Trigger Rolling | |
| Mono/color | Mono | Color |
| Pixel format | Mono 8/10/10Packed/12/12Packed | Mono 8/10/12, Bayer RG 8/10/10Packed/12/12Packed, YUV422Packed, YUV422_YUYV_Packed, RGB 8, BGR 8 |
| Binning | Supports 1 × 1, 2 × 2 | |
| Decimation | Supports 1 × 1, 2 × 2, 4 × 4 | |
| Reverse image | Supports horizontal and vertical reverse image output | |
| Electrical feature | | |
| Data interface | USB3.0 | |
| Digital I/O | Bi-directional non-isolated I/O × 2 (Line 2, Line 5) | |
| Power supply | USB3.0 power supply | |
| Power consumption | Typ. 1.5 W@5 VDC | Typ. 1.8 W@5 VDC |
| Mechanical | | |
| Lens mount | Single board camera: None C-mount camera: C-mount M12-mount camera: M12-mount | |
| Dimension | Single board camera: 32.5 mm × 32.5 mm × 1.6 mm (1.3" × 1.3" × 0.1") C-mount camera: 35 mm × 35 mm × 8.6 mm (1.4" × 1.4" × 0.3") M12-mount camera: 35 mm × 35 mm × 8.6 mm (1.4" × 1.4" × 0.3") | |
| Weight | Single board camera: Approx. 10 g (0.02 lb.) C-mount camera: Approx. 30 g (0.07 lb.) M12-mount camera: Approx. 43.5 g (0.1 lb.) | |
| Temperature | Working temperature: 0 °C to 50 °C (32 °F to 122 °F) Storage temperature: -30 °C to 70 °C (-22 °F to 158 °F) | |
| Humidity | 20% to 80% RH, non-condensing | |
| General | | |
| Client software | MVS or third-party software with USB3 Vision Protocol | |
| Operating system | 32/64-bit Windows XP/7/10, 32/64-bit Linux and 64-bit MacOS | |
| Compatibility | USB3 Vision, GenICam | |
| Certification | CE, RoHS, KC | |

Dimension

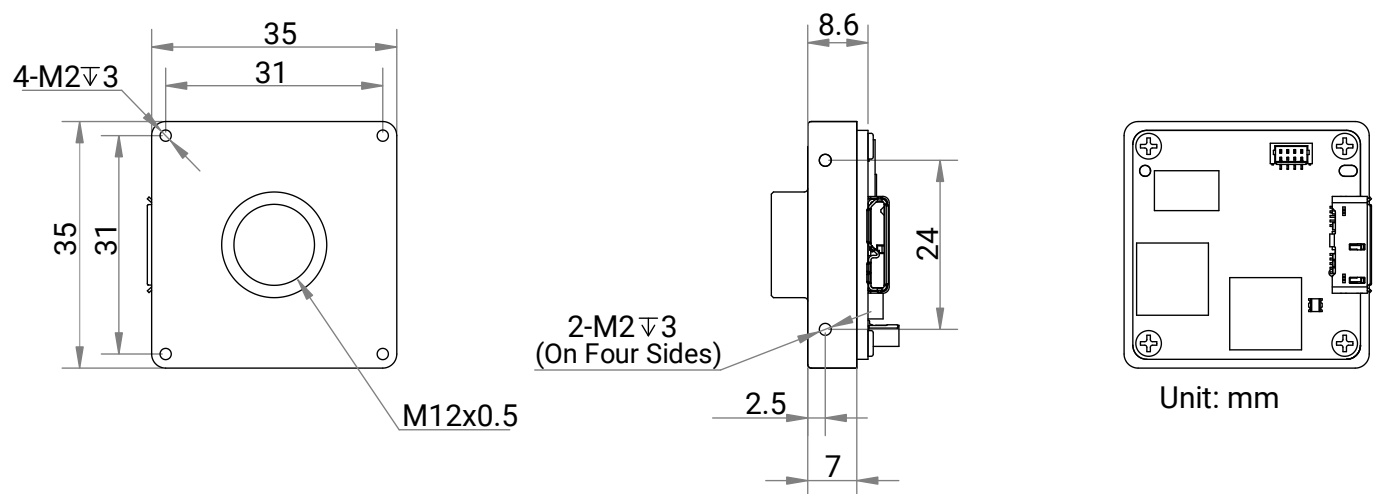
Single board camera:



C-mount camera:



M12-mount camera:



HIKROBOT

Hangzhou Hikrobot Co., Ltd.
en.hikrobotics.com